

NUM information

JOURNAL FOR CNC-TOTAL SOLUTIONS

No 44 – February 2006



New Corporate Structure



Adapting the organisational structure to our successful market strategy

Continuity and customer benefits

NUM's position in the market

Organisation of the NUM Group

Effects of the NUM changes on you, the customer



NUM is broadening its success in the field of CNC total solutions

Adapting the organisational structure to our successful market strategy

Num has acquired a wealth of knowledge as an engineering partner for automating CNC controlled production machines. The decision made several years ago to specialise in the development of complex CNC total solutions has been reaping big dividends.

To be able to continue our successful expansion in the market, the NUM organisation is being optimised and brought into line with these strategic objectives. Consequently, the areas of special application developments and customer support within the NUM group are being enlarged.

To optimise this strategy, the NUM Group was spun-off from the Schneider Electric Group. Nevertheless, the NUM Group will remain a business partner of Schneider Electric.

These organisational changes will reinforce NUM's position as a European company that is active on a global scale. The company headquarters is in Switzerland. All companies of the NUM Group will be renamed NUM.

In Switzerland NUM AG (formerly NUM Güttinger AG),
in Germany NUM GmbH (formerly NUM Güttinger GmbH)
and in Spain NUM SA (formerly TELENUM SA)

Continuity

is ensured; the benefits to the customer are increased

The ability to bring innovative machines to the market is no small feat – machine manufacturers need reliable partners.

Because of the trust they place in reliability, machine manufacturers count on NUM products. This is also the reason why NUM will continue to provide its entire spectrum of innovative skills to its partners.

In addition to the highly-flexible CNCs and servo drives, which can be customised to meet individual customer needs, our innovative engineering team with interdisciplinary expertise is a key element in our ability to offer solutions geared to the demands of the manufacturing world.

Our stated goal is to consolidate this knowledge within the entire NUM Group and thus further enhance the benefits we offer to our customers. We simply want to continue to be better than the others! This is and will remain our goal in the future!

Apart from our expanding capacities for application development and customer support, we are further pushing the development of new basic products that are required for CNC total solutions.

NUM's position in the market

As a supplier of CNC total solutions for automating production machines, NUM offers a wide range of CNCs, servo and spindle drives. They have been designed to be highly flexible so that they can easily be adapted to virtually any machine. Using standard CNCs as its foundation, NUM has intensified its software development for special applications, allowing machine users to get the most out of their machines.

We focus on the needs of the machine users so that they are able to optimally program and control their production processes.

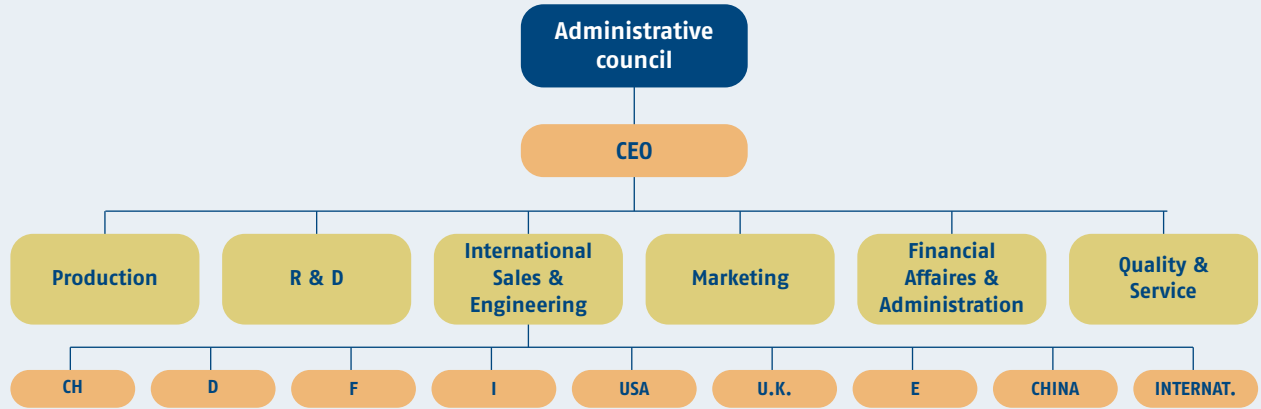
Organisation of the NUM-Group

This move enables the organisation to better accommodate the market strategy, which is outlined below. The new NUM organisation now boasts lean centralized services with extensive development capacities.

Local machine technology centres (MTCs) continue to support our partners abroad. The local MTCs assume the responsibilities for sales, application solutions and service.



Headquarters of the NUM Group is at NUM AG Teufen, Switzerland, AR, near St. Gallen.



What effects will these changes at NUM have on you, the customer?

Only positive ones! Application expertise and customer support are an important pillar of our market strategy. The specific needs of our partners (machine manufacturers and users) are a major part of our business. Customer support remains unchanged – your contact at NUM is your local MTC.

New «Corporate Identity» A European company active on a global scale

NUM has adopted a new corporate design to visually underscore the company's dedicated orientation to individual customer needs. The company logo has been modernised without completely abandoning the ties to the old logo.

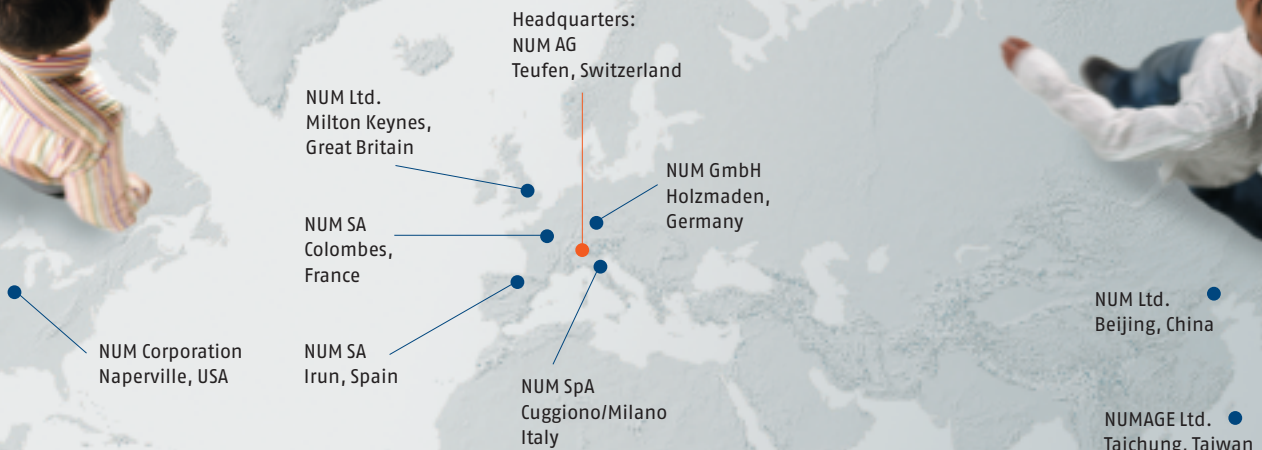
This modernisation of our corporate identity also embraces our printed media and our homepage. This is illustrated in our new company brochure entitled: "CNC Power-Engineering – Always on the Move", which is also available in German, French and Italian. You can either download it from the Internet at www.num.com or request it by phone from your nearest MTC (please turn over the page).

We strongly believe that our new optimised form of organisation will allow us to better serve our customers and partners.



CNC Power-Engineering Worldwide

NUM competence centers for CNC high-end applications:



NUM has service centers around the world.

Visit our Website for the current list of locations.

www.num.com