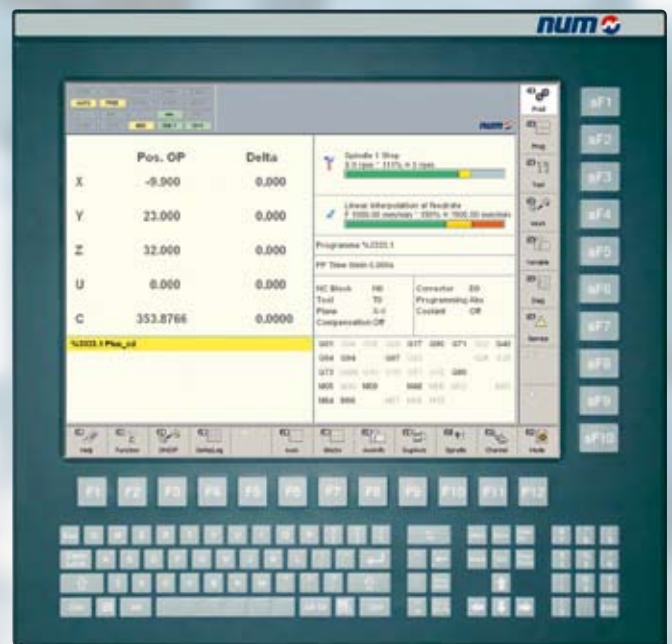


FS151i-KBD

Control Panel with integrated Industrial PC and Keyboard



FS151i-KBD



MP03 (Option)

- Control panel with integrated industrial PC
- Compact, with integrated keyboard, expandable
- Designed especially for NUMpass HMI

FS151i-KBD: Control Panel with integrated Industrial PC and Keyboard

The FS151i-KBD includes 22 function keys as well as a Qwerty keyboard which can be used in parallel with an optional PC keyboard. The intuitively and logical designed NUMpass HMI together with the 22 function keys provides an easy and application oriented operation. Adapted in design and size the machine panel MP03 is an ideal expansion to the FS151i-KBD.

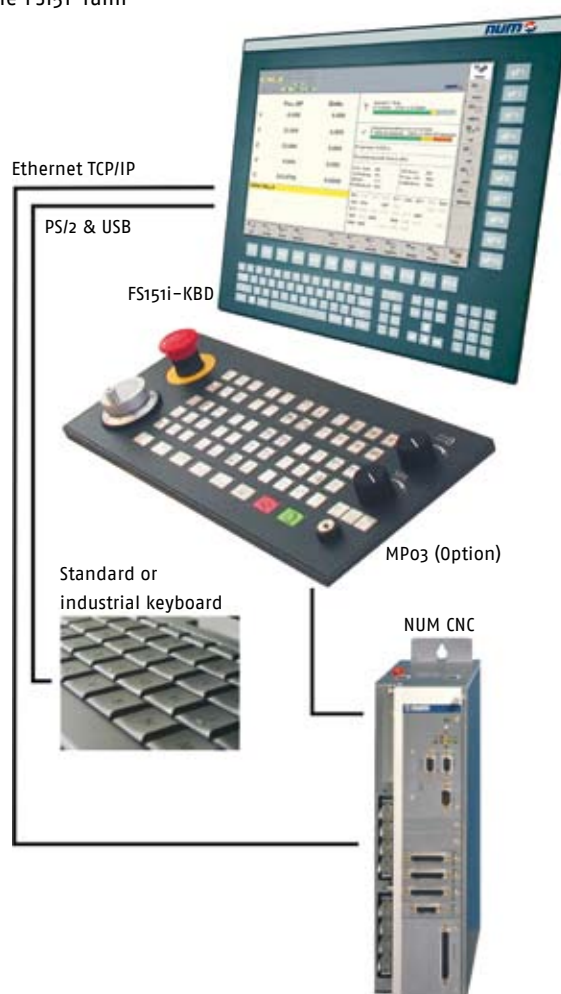
Configured either with Windows Professional or Embedded the various versions of the FS151i-KBD respond to different applications and requirements of the customer.

Machine manufacturers can design their system concepts mechanically identical due to the same cutaway and hole pattern of the whole FS151i-family

ly - no matter if with or without integrated PC respectively with or without Qwerty keyboard.

Specifications

Dimensions	Size 410 x 400 x 96mm (W x H x D) Thickness of front panel 8mm	
Monitor	Type	Coloured TFT Monitor
	Screen size	15"
	Resolution	1024 x 768
	Colours	16.19 millions
	Protection	2 mm mineral glass
Keys	22 function keys with shaped edges QWERTY keyboard with facet stamping	
Interfacing	<ul style="list-style-type: none"> • PS/2 socket for PC – keyboard can be used in parallel to the keys on the panel • Sockets facing downwards, plugs stay within the panel area VGA and DVI output 3 Ethernet 2 USB 1 serial 1 parallel	
Power	24V _{DC}	
Protection Class	Front panel	IP65
	To cabinet	IP54
	Rear	IP20
Option	Machine Panel MP03	



Version
CPU
Operating system
RAM
Mass storage
Power consumption
Order number

FS151i-KBD P1 CF
Celeron M 800MHz (without fan)
Windows XP Embedded
DDR 512 MB
CompactFlash™ 1GB
approx. 65W
APPC 555 510

FS151i-KBD P2 HD
Pentium M 1.8GHz (with fan)
Windows XP Professional
DDR 1GB
Hard Disc 40GB
approx. 70W
APPC 555 513