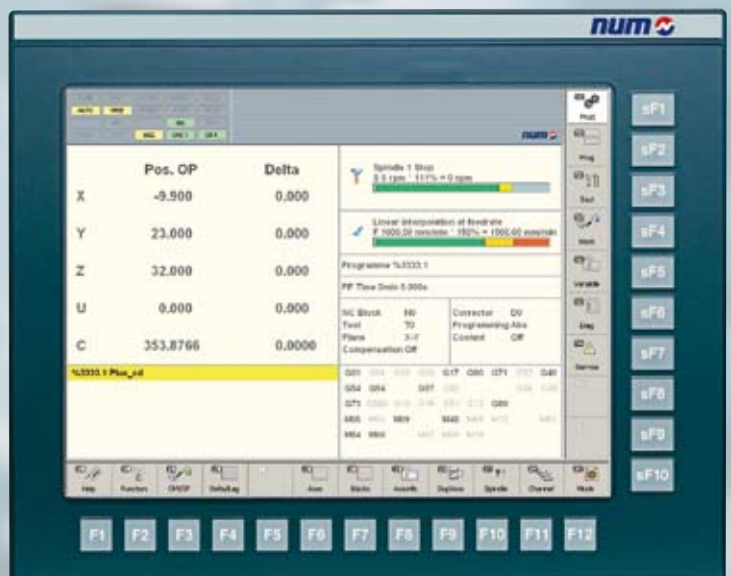


# FS151i

## Control Panel with integrated Industrial PC

FS151i



MP03 (Option)



- Control panel with integrated industrial PC
- Compact, expandable with machine panel
- Designed especially for NUMpass HMI

# FS151i: Control Panel with integrated Industrial PC

The FS151i includes 22 function keys which can be used in parallel with an optional PC keyboard. The intuitively and logical designed NUMpass HMI together with the 22 function keys provides an easy and application oriented operation. Adapted in design and size the machine panel MP03 is an ideal expansion to the FS151i.

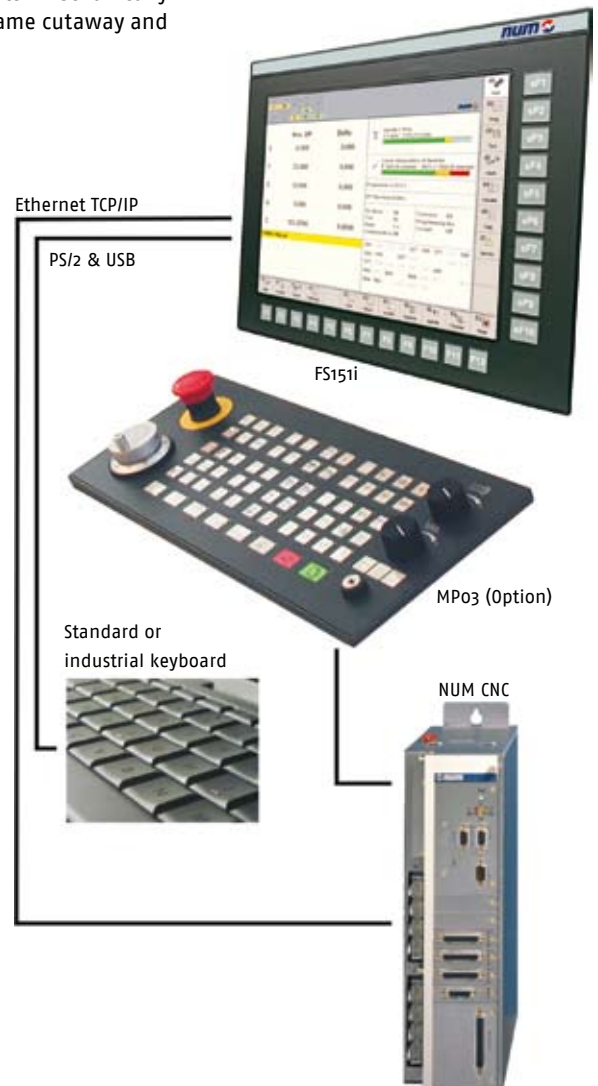
Configured either with Windows Professional or Embedded the various versions of the FS151i respond to different applications and requirements of the customer.

Machine manufacturers can design their system concepts mechanically identical due to the same cutaway and

hole pattern of the whole FS151-family – no matter if with or without integrated PC respectively with or without Qwerty keyboard.

## Specifications

<b>Dimensions</b>	Size 410 x 330 x 96mm (W x H x D) Thickness of front panel 8mm	
<b>Monitor</b>	Type	Coloured TFT Monitor
	Screen size	15"
	Resolution	1024 x 768
	Colours	16.19 millions
	Protection	2 mm mineral glass
<b>Keys</b>	22 function keys with shaped edges	
<b>Interfacing</b>	<ul style="list-style-type: none"> <li>• PS/2 socket for PC – keyboard can be used in parallel to the keys on the panel</li> <li>• Sockets facing downwards, plugs stay within the panel area</li> </ul> VGA and DVI output 3 Ethernet 2 USB 1 serial 1 parallel	
<b>Power</b>	24V <sub>DC</sub>	
<b>Protection Class</b>	Front panel	IP65
	To cabinet	IP54
	Rear	IP20
<b>Option</b>	Machine Panel MP03	



**Version**  
**CPU**  
**Operating system**  
**RAM**  
**Mass storage**  
**Power consumption**  
**Order number**

**FS151i-P1 CF**  
 Celeron M 800MHz (without fan)  
 Windows XP Embedded  
 DDR 512 MB  
 CompactFlash™ 1GB  
 approx. 65W  
**APPC 555 410**

**FS151i-P2 HD**  
 Pentium M 1.8GHz (with fan)  
 Windows XP Professional  
 DDR 1GB  
 Hard Disc 40GB  
 approx. 70W  
**APPC 555 413**